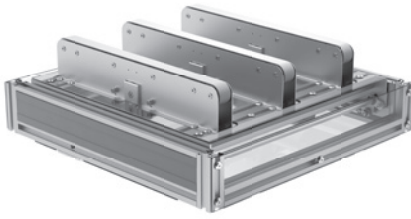


## R5T0100

## Transfer Unit 90°, 100

**Application**

90 degree transfer of products in various sizes from min. 400 x 600 to max. 1200 x 1200 mm.

The Transfer Unit 90° can be integrated into any zone of a Powered Roller Conveyor Straight.

**Technical data**

Brushless 48V DC motor for lifting unit and belt  
Temperature range: from +2°C to +40°C

Max. continuous current of lifting unit motor: 6.6 A

Max. continuous current of belt motor: 8.6 A

Timing belt material: PU

Duration of the lift movement: 0.5 s

Max. cycle time with 35 kg and conveyed material dimensions 600 x 400 mm:

900 cycles / hour

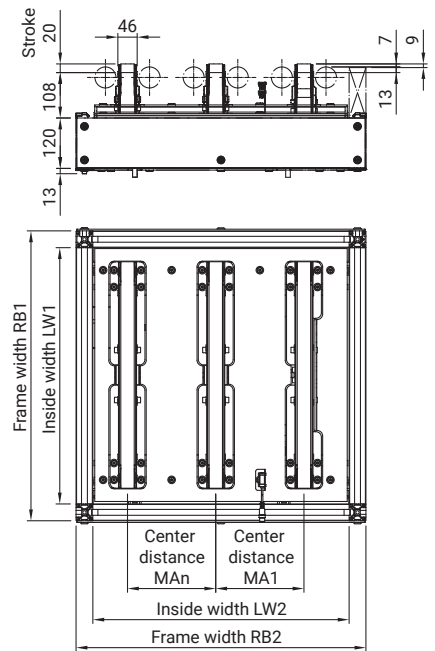
Max. weight of conveyed material: 100 kg

**Control unit:**

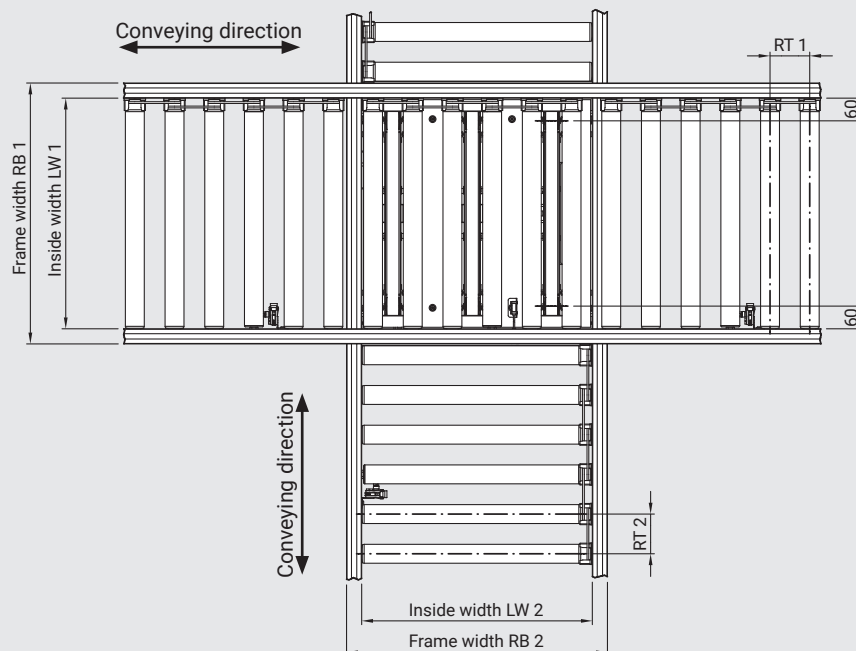
Motor control integrated in the 48 V motor, incl. 5 m cable with open end

**Configuration:**

Drives for lifting unit and belts are preconfigured, control by customer through higher-level control system via 24 VDC I/Os



## Dimensions



## Request/Order

Please use our request form at [www.robotunits.com](http://www.robotunits.com).

Drawings: dimensions in mm